



Labels for Life.

SMT Label Automation Solutions



identco.com



FOR 35 YEARS IDENTCO has provided industry-leading solutions for the most demanding circuit board and component track and trace challenges. From through-hole wave soldering to today's dynamic SMT environments, IDENTCO has been there every step of the way.

SURFACE CHEMISTRY AND ADHESIVE EXPERTISE; PRECISION DIE CUTTING LEADERSHIP

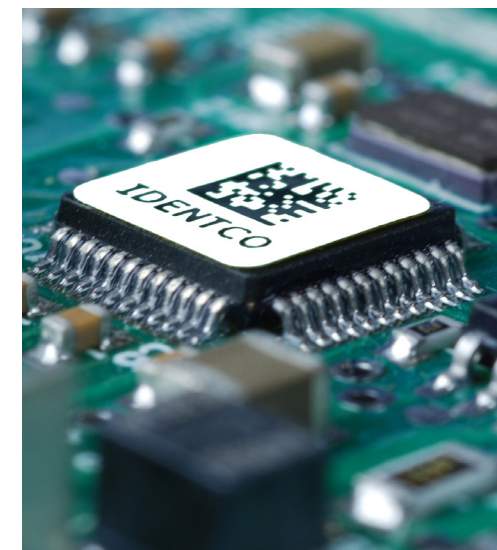
Our US, Mexico, Europe and Asia locations provide global and local customers alike consistent service and product excellence. Chemists in our fully equipped R&D lab partner closely with the leading suppliers of the raw materials we require to develop products that outperform. All our labels and ribbons for electronics are routinely subjected to the rigorous testing protocols of KYZEN and ZESTRON to ensure there is always an IDENTCO label to fill the need.



AUTOMATE YOUR SMT LABELING

Providing complete labeling solutions to the electronics industry has been in IDENTCO's DNA from the day we first opened in 1986 and continues to be at the heart of what we do every day. Our electronics labeling solutions integrate best-in-class IDENTCO high performance labels with the precision and speed required for your SMT line.

SMT PICK & PLACE LABELS



INCREASE THROUGHPUT AND IMPROVE YIELD WITH PPL™ SERIES

PICK AND PLACE LABELS

PPL™ Series labels are engineered for use in SMT pick and place label feeders for precise placement on printed circuit boards and components. All PPL Series labels are made of pressure-sensitive polyimide film, engineered with heat- and solvent-resistant print receptive topcoats.

When printed with IDENTCO TTRR™ Series thermal transfer ribbons, the result is permanent, fully legible identification throughout your entire process workflow. PPL Series labels are provided standard on IDENTCO's proprietary REEL-e™ static dissipative reels. REEL-e™ reels are built to protect and support the label spool, are RoHS compliant and compatible with all major SMT label feeders and automation equipment.

FEATURES AND BENEFITS

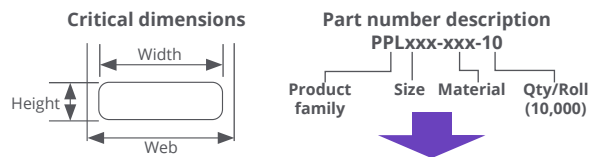
- Polyimide-based labels and printed data endure high temperatures and aggressive cleaning chemistries found in solder reflow, cleaning and testing operations
- Compatible with all major pick and place and auto-apply systems, including IDENTCO's ILP™ Series pick and place label feeders
- Blank stock labels for in-house, on-demand thermal transfer printing
- Pre-printed, 100% verified labels available from our worldwide Print Service Centers
- Labels provided on robust REEL-e™ static dissipative reels
- Quick-release film liners eliminate dust and ensure smooth compatibility with automation equipment
- Performance-matched ribbons ensure highest performance
- ESD materials meet ANSI/ESD S20.20 requirements
- UL approved when used with the appropriate IDENTCO TTRR™ ribbon specified by Underwriter's Laboratory and the Canadian Standards Association.

REEL-e™ Static Dissipative Reels

The REEL-e™ is recyclable, 100% RoHS compliant and made of an electrostatic dissipative plastic that aids in the elimination of static build-up. This ensures static-free delivery of labels and die-cut masks to label feeders and auto-apply machines. All PPL labels are supplied on REEL-e reels.



STOCK PPL™ LABELS Custom sizes available



Recommended ribbons are in jumbo size rolls. See page 6 for standard length ribbons.

Actual size W x H	Part number		Polyimide material	Description	Web width inch (mm)	Recommended Ribbon	Label feeder compatibility
	Glassine liner	Film liner					
PPL103 0.118" x 0.118" (3.0 mm x 3.0 mm)	PPL103-403-10	PPL103-403FL-10	TT403	2 mil General purpose gloss	0.375 (9.53)	TTRR-D1.0ZJ	ILP-30 only
	PPL103-416-10	PPL103-416FL-10	TT416	2 mil Economy gloss	0.375 (9.53)	TTRR-D1.0ZJ	ILP-30 only
	PPL103-433-10	PPL103-433FL-10	TT433	2 mil Hi-performance gloss	0.375 (9.53)	TTRR-CR1.0ZJ	ILP-30 only
	PPL103-451-10	PPL103-451FL-10	TT451	2 mil ESD semi-gloss	0.375 (9.53)	TTRR-D1.0ZJ	ILP-30 only
	PPL103-481-10	PPL103-481FL-10	TT481	1 mil Low-profile gloss	0.375 (9.53)	TTRR-CR1.0ZJ	ILP-30 only
PPL104 0.157" x 0.157" (4.0 mm x 4.0 mm)	PPL104-403-10	PPL104-403FL-10	TT403	2 mil General purpose gloss	0.450 (11.4)	TTRR-D1.0ZJ	ILP-30 / ILP-45
	PPL104-416-10	PPL104-416FL-10	TT416	2 mil Economy gloss	0.450 (11.4)	TTRR-D1.0ZJ	ILP-30 / ILP-45
	PPL104-433-10	PPL104-433FL-10	TT433	2 mil Hi-performance gloss	0.450 (11.4)	TTRR-CR1.0ZJ	ILP-30 / ILP-45
	PPL104-451-10	PPL104-451FL-10	TT451	2 mil ESD semi-gloss	0.450 (11.4)	TTRR-D1.0ZJ	ILP-30 / ILP-45
	PPL104-481-10	PPL104-481FL-10	TT481	1 mil Low-profile gloss	0.450 (11.4)	TTRR-CR1.0ZJ	ILP-30 / ILP-45
PPL105 0.197" x 0.197" (5.0 mm x 5.0 mm)	PPL105-403-10	PPL105-403FL-10	TT403	2 mil General purpose gloss	0.450 (11.4)	TTRR-D1.0ZJ	ILP-30 / ILP-45
	PPL105-416-10	PPL105-416FL-10	TT416	2 mil Economy gloss	0.450 (11.4)	TTRR-D1.0ZJ	ILP-30 / ILP-45
	PPL105-433-10	PPL105-433FL-10	TT433	2 mil Hi-performance gloss	0.450 (11.4)	TTRR-CR1.0ZJ	ILP-30 / ILP-45
	PPL105-451-10	PPL105-451FL-10	TT451	2 mil ESD semi-gloss	0.450 (11.4)	TTRR-D1.0ZJ	ILP-30 / ILP-45
	PPL105-481-10	PPL105-481FL-10	TT481	1 mil Low-profile gloss	0.450 (11.4)	TTRR-CR1.0ZJ	ILP-30 / ILP-45
PPL106 0.25" x 0.25" (6.35 mm x 6.35 mm)	PPL106-403-10	PPL106-403FL-10	TT403	2 mil General purpose gloss	0.450 (11.4)	TTRR-D1.0ZJ	ILP-30 / ILP-45
	PPL106-416-10	PPL106-416FL-10	TT416	2 mil Economy gloss	0.450 (11.4)	TTRR-D1.0ZJ	ILP-30 / ILP-45
	PPL106-433-10	PPL106-433FL-10	TT433	2 mil Hi-performance gloss	0.450 (11.4)	TTRR-CR1.0ZJ	ILP-30 / ILP-45
	PPL106-451-10	PPL106-451FL-10	TT451	2 mil ESD semi-gloss	0.450 (11.4)	TTRR-D1.0ZJ	ILP-30 / ILP-45
	PPL106-481-10	PPL106-481FL-10	TT481	1 mil Low-profile gloss	0.450 (11.4)	TTRR-CR1.0ZJ	ILP-30 / ILP-45
PPL107 0.275" x 0.275" (7.0 mm x 7.0 mm)	PPL107-403-10	PPL107-403FL-10	TT403	2 mil General purpose gloss	0.450 (11.4)	TTRR-D1.0ZJ	ILP-30 / ILP-45
	PPL107-416-10	PPL107-416FL-10	TT416	2 mil Economy gloss	0.450 (11.4)	TTRR-D1.0ZJ	ILP-30 / ILP-45
	PPL107-433-10	PPL107-433FL-10	TT433	2 mil Hi-performance gloss	0.450 (11.4)	TTRR-CR1.0ZJ	ILP-30 / ILP-45
	PPL107-451-10	PPL107-451FL-10	TT451	2 mil ESD semi-gloss	0.450 (11.4)	TTRR-D1.0ZJ	ILP-30 / ILP-45
	PPL107-481-10	PPL107-481FL-10	TT481	1 mil Low-profile gloss	0.450 (11.4)	TTRR-CR1.0ZJ	ILP-30 / ILP-45
PPL108 0.315" x 0.315" (8.0 mm x 8.0 mm)	PPL108-403-10	PPL108-403FL-10	TT403	2 mil General purpose gloss	0.450 (11.4)	TTRR-D1.0ZJ	ILP-30 / ILP-45
	PPL108-416-10	PPL108-416FL-10	TT416	2 mil Economy gloss	0.450 (11.4)	TTRR-D1.0ZJ	ILP-30 / ILP-45
	PPL108-433-10	PPL108-433FL-10	TT433	2 mil Hi-performance gloss	0.450 (11.4)	TTRR-CR1.0ZJ	ILP-30 / ILP-45
	PPL108-451-10	PPL108-451FL-10	TT451	2 mil ESD semi-gloss	0.450 (11.4)	TTRR-D1.0ZJ	ILP-30 / ILP-45
	PPL108-481-10	PPL108-481FL-10	TT481	1 mil Low-profile gloss	0.450 (11.4)	TTRR-CR1.0ZJ	ILP-30 / ILP-45

Actual size W x H	Part number		Polyimide material	Description	Web width inch (mm)	Recommended Ribbon	Label feeder compatibility
	Glassine liner	Film liner					
PPL109 0.375" x 0.375" (9.53 mm x 9.53 mm)	PPL109-403-10	PPL109-403FL-10	TT403	2 mil General purpose gloss	0.50 (12.7)	TTRR-D1.0ZJ	ILP-30 / ILP-45
	PPL109-416-10	PPL109-416FL-10	TT416	2 mil Economy gloss	0.50 (12.7)	TTRR-D1.0ZJ	ILP-30 / ILP-45
	PPL109-433-10	PPL109-433FL-10	TT433	2 mil Hi-performance gloss	0.50 (12.7)	TTRR-CR1.0ZJ	ILP-30 / ILP-45
	PPL109-451-10	PPL109-451FL-10	TT451	2 mil ESD semi-gloss	0.50 (12.7)	TTRR-D1.0ZJ	ILP-30 / ILP-45
	PPL109-481-10	PPL109-481FL-10	TT481	1 mil Low-profile gloss	0.50 (12.7)	TTRR-CR1.0ZJ	ILP-30 / ILP-45
PPL110 0.65" x 0.20" (16.51 mm x 5.08 mm)	PPL110-403-10	PPL110-403FL-10	TT403	2 mil General purpose gloss	0.85 (21.59)	TTRR-D1.0ZJ	ILP-45 only
	PPL110-416-10	PPL110-416FL-10	TT416	2 mil Economy gloss	0.85 (21.59)	TTRR-D1.0ZJ	ILP-45 only
	PPL110-433-10	PPL110-433FL-10	TT433	2 mil Hi-performance gloss	0.85 (21.59)	TTRR-CR1.0ZJ	ILP-45 only
	PPL110-451-10	PPL110-451FL-10	TT451	2 mil ESD semi-gloss	0.85 (21.59)	TTRR-D1.0ZJ	ILP-45 only
	PPL110-481-10	PPL110-481FL-10	TT481	1 mil Low-profile gloss	0.85 (21.59)	TTRR-CR1.0ZJ	ILP-45 only
PPL111 0.60" x 0.25" (15.24 mm x 6.35 mm)	PPL111-403-10	PPL111-403FL-10	TT403	2 mil General purpose gloss	0.85 (21.59)	TTRR-D1.0ZJ	ILP-45 only
	PPL111-416-10	PPL111-416FL-10	TT416	2 mil Economy gloss	0.85 (21.59)	TTRR-D1.0ZJ	ILP-45 only
	PPL111-433-10	PPL111-433FL-10	TT433	2 mil Hi-performance gloss	0.85 (21.59)	TTRR-CR1.0ZJ	ILP-45 only
	PPL111-451-10	PPL111-451FL-10	TT451	2 mil ESD semi-gloss	0.85 (21.59)	TTRR-D1.0ZJ	ILP-45 only
	PPL111-481-10	PPL111-481FL-10	TT481	1 mil Low-profile gloss	0.85 (21.59)	TTRR-CR1.0ZJ	ILP-45 only
PPL112 0.75" x 0.25" (19.05 mm x 6.35 mm)	PPL112-403-10	PPL112-403FL-10	TT403	2 mil General purpose gloss	0.875 (22.225)	TTRR-D1.0ZJ	ILP-45 only
	PPL112-416-10	PPL112-416FL-10	TT416	2 mil Economy gloss	0.875 (22.225)	TTRR-D1.0ZJ	ILP-45 only
	PPL112-433-10	PPL112-433FL-10	TT433	2 mil Hi-performance gloss	0.875 (22.225)	TTRR-CR1.0ZJ	ILP-45 only
	PPL112-451-10	PPL112-451FL-10	TT451	2 mil ESD semi-gloss	0.875 (22.225)	TTRR-D1.0ZJ	ILP-45 only
	PPL112-481-10	PPL112-481FL-10	TT481	1 mil Low-profile gloss	0.875 (22.225)	TTRR-CR1.0ZJ	ILP-45 only
PPL113 0.90" x 0.25" (22.86 mm x 6.35 mm)	PPL113-403-10	PPL113-403FL-10	TT403	2 mil General purpose gloss	1.10 (27.940)	TTRR-D1.57ZJ	Contact IDENTCO
	PPL113-416-10	PPL113-416FL-10	TT416	2 mil Economy gloss	1.10 (27.940)	TTRR-D1.57ZJ	Contact IDENTCO
	PPL113-433-10	PPL113-433FL-10	TT433	2 mil Hi-performance gloss	1.10 (27.940)	TTRR-CR1.57ZJ	Contact IDENTCO
	PPL113-451-10	PPL113-451FL-10	TT451	2 mil ESD semi-gloss	1.10 (27.940)	TTRR-D1.57ZJ	Contact IDENTCO
	PPL113-481-10	PPL113-481FL-10	TT481	1 mil Low-profile gloss	1.10 (27.940)	TTRR-CR1.57ZJ	Contact IDENTCO
PPL114 1.00" x 0.25" (25.40 mm x 6.35 mm)	PPL114-403-10	PPL114-403FL-10	TT403	2 mil General purpose gloss	1.125 (28.575)	TTRR-D1.57ZJ	Contact IDENTCO
	PPL114-416-10	PPL114-416FL-10	TT416	2 mil Economy gloss	1.125 (28.575)	TTRR-D1.57ZJ	Contact IDENTCO
	PPL114-433-10	PPL114-433FL-10	TT433	2 mil Hi-performance gloss	1.125 (28.575)	TTRR-CR1.57ZJ	Contact IDENTCO
	PPL114-451-10	PPL114-451FL-10	TT451	2 mil ESD semi-gloss	1.125 (28.575)	TTRR-D1.57ZJ	Contact IDENTCO
	PPL114-481-10	PPL114-481FL-10	TT481	1 mil Low-profile gloss	1.125 (28.575)	TTRR-CR1.57ZJ	Contact IDENTCO

* See page 6 for ribbon part numbers and specifications

MATERIAL	COLOR	FINISH	TEMPERATURE RANGE	MATERIAL DESCRIPTION	REBBISS	UL/CSA
TT403	White	Gloss	F: -40° to 572° C: -40 to 300°	High performance 2 mil (50.8 µm) high temperature-resistant polyimide film with 2 mil (50.8 µm) permanent acrylic adhesive and gloss white thermal transfer top coat.	TTRR-D* TTRR-B TTRR-CR	UL
TT416	White	Gloss	F: -40° to 572° C: -40 to 300°	Standard performance 2 mil (50.8 µm) high temperature-resistant polyimide film with 1.5 mil (38.1 µm) permanent acrylic adhesive and gloss white thermal transfer top coat.	TTRR-D* TTRR-B TTRR-CR	UL
TT433	White	Gloss	F: -40° to 572° C: -40 to 300°	Ultra performance 2 mil (50.8 µm) high temperature-resistant polyimide film with 2 mil (50.8 µm) permanent acrylic adhesive and gloss white thermal transfer top coat.	TTRR-CR* TTRR-B TTRR-D	UL
TT451	White	Semi-Gloss	F: -40° to 572° C: -40 to 300°	Electrostatic dissipative (ESD) 2 mil (50.8 µm) high temperature-resistant polyimide film with 2 mil (50.8 µm) permanent acrylic adhesive and gloss white thermal transfer top coat.	TTRR-D* TTRR-B TTRR-CR	UL
TT481	White	Gloss	F: -40° to 572° C: -40 to 300°	Low profile 1 mil (25.4 µm) high temperature-resistant polyimide film with 1 mil (25.4 µm) permanent acrylic adhesive and gloss white thermal transfer top coat.	TTRR-CR* TTRR-B	UL

* Best ribbon for most applications.

THERMAL TRANSFER RIBBONS



TTRR™ THERMAL TRANSFER RESIN RIBBONS

Achieve ultimate performance and legend permanence by printing PPL™ labels with IDENTCO thermal transfer resin ribbons. Refer to the charts on pages 4-5 to find the recommended ribbon formulation and width for your chosen label. All TTRR ribbons and PPL label materials have been tested by KYZEN and ZESTRON for their specific chemistries. PPL/TTRR label and ribbon combinations have also passed UL testing and are required to be used together for UL recognition.

Part Number	Width	Length	Color	
Standard resin ribbon				
TTRR-B1.0Z	1.0" (25.4mm)	984' (300m)	Black	CSO*
TTRR-B1.0ZJ	1.0" (25.4mm)	1476' (450m)	Black	CSO*
TTRR-B1.57Z	1.57" (39.87mm)	984' (300m)	Black	CSO*
TTRR-B1.57ZJ	1.57" (39.87mm)	1476' (450m)	Black	CSO*
High performance resin ribbon				
TTRR-D1.0Z	1.0" (25.4mm)	984' (300m)	Black	CSO*
TTRR-D1.0ZJ	1.0" (25.4mm)	1476' (450m)	Black	CSO*
TTRR-D1.57Z	1.57" (39.87mm)	984' (300m)	Black	CSO*
TTRR-D1.57ZJ	1.57" (39.87mm)	1476' (450m)	Black	CSO*
Extreme performance resin ribbon				
TTRR-CR1.0Z	1.0" (25.4mm)	984' (300m)	Black	CSO*
TTRR-CR1.0ZJ	1.0" (25.4mm)	1476' (450m)	Black	CSO*
TTRR-CR1.57Z	1.57" (39.87mm)	984' (300m)	Black	CSO*
TTRR-CR1.57ZJ	1.57" (39.87mm)	1476' (450m)	Black	CSO*

* Coated side out

PRINT SERVICE CENTERS



LET US PRINT FOR YOU!

IDENTCO Print Service Centers offer a cost-effective alternative to your own in-house printing. Variable linear and 2D barcodes are 100% verified for readability before we ship to you. Located in the US, Europe and Mexico, our IDENTCO Print Service Centers help you avoid downtime from printer problems or lack of media.



THERMAL TRANSFER PRINTER

ELP™-I CENTER ALIGNED PRINTER

With its center-alignment feature, precise registration capabilities and high-resolution 600 dpi printing, the ELP-I thermal transfer printer is the industry standard for printing small 2D codes and text on miniature PPL labels for SMT applications.

Two configurations with interchangeable print heads allows for 300 dpi resolution or 600 dpi resolution. Stand-alone printing promotes cost savings by ease of use, freeing up valuable floor space and allowing diverse printer placement. No PC needed.

FEATURES AND BENEFITS

- Interchangeable printheads
- Exceptional print registration
- Handles web widths narrow as 0.45" (11.43mm)
- Center-align version
- Large color LCD touch screen
- Minimal waste during calibration
- Easy loading and removal of media
- User-friendly operation

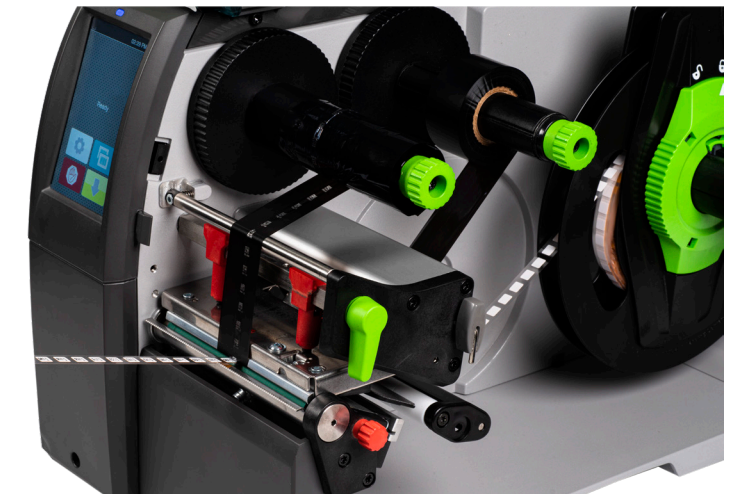
SPECIFICATIONS

- 450 meter ribbon lengths
- 6" (150mm) per second print speed at 600dpi
- Holds 8" (205mm) OD media rolls
- Standard 1" (25.4mm) core ribbons (CSO/CSI)
- 2 year printer warranty
- Optional cutter
- Optional applicator

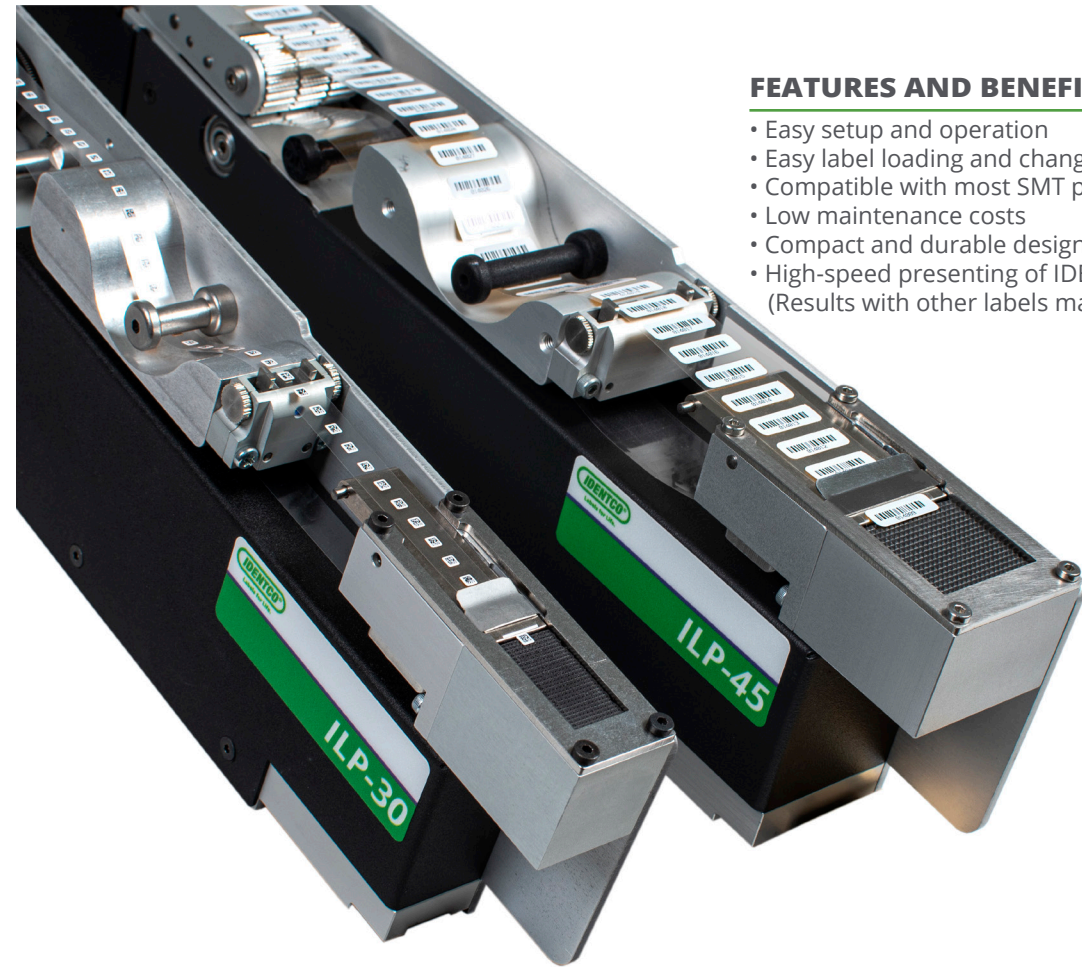
STANDARD INTERFACES

- USB 2.0
- Ethernet
- Parallel
- 9-pin RS-232
- 2 USB hosts for scanner or keyboard

Part number	ELP-I-600C
Description	Label printer, electronic
Label width	0.157 - 4.133 in (4-110mm)
Label height	0.157 - 39.0 in (4-990.6mm)
Label roll size	8.0 in (205mm) outside diameter



SMT LABEL PRESENTERS



HIGH SPEED, AUTOMATED LABEL PLACEMENT

IDENTCO offers a robust range of label feeders/presenters for integration with SMT pick & place machines. Automatically pick and place PPL™ labels like any other SMD component. Each model is designed and manufactured to the highest standards for a seamless, reliable interface with your SMT pick and place equipment. The ILP-30 is the slimmest label presenter on the market. At merely 30mm (1.18 in.) wide, the ILP-30 requires only one feeder position in your pick and place machine and can feed labels as small as 3mm x 3mm. Choose the ILP-45 for applications requiring a wider variety in label size from small to large.

FEATURES AND BENEFITS

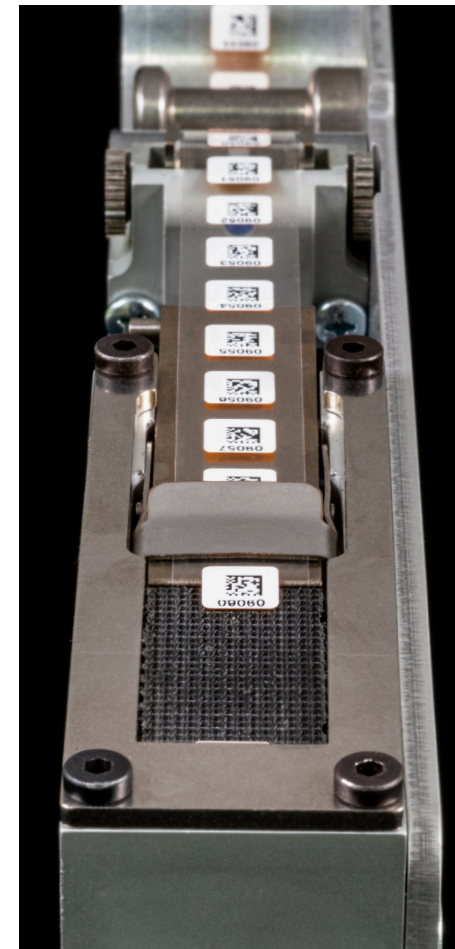
- Easy setup and operation
- Easy label loading and change-over
- Compatible with most SMT pick & place machines
- Low maintenance costs
- Compact and durable designs
- High-speed presenting of IDENTCO PPL™ labels (Results with other labels may vary)

Part number	ILP-30	ILP-45
Label width	0.118 - 0.31 in (3 - 8mm)	0.118 - 0.984 in (3 - 25mm)
Label height	0.118 - 0.984 in (3 - 25mm)	0.118 - 0.984 in (3 - 25mm)
Maximum liner width	0.59 in (15mm)	1.18 in (30mm)



ACCURATE LABEL PLACEMENT FOR YOUR SMT LINE

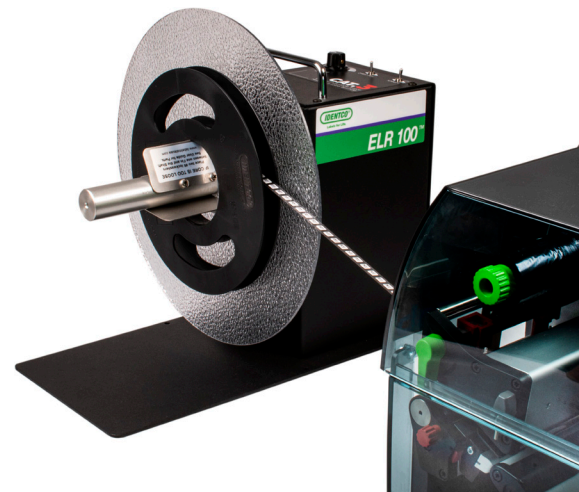
IDENTCO label presenters are compatible with the industry's most popular SMT pick and place equipment. Compatibility of each ILP model may vary by the series or version of specific pick and place machinery. Refer to the chart below. The IDENTCO Label Systems Engineer can assist in proving you the correct label feeder for your machines.



PICK & PLACE MACHINE COMPATIBILITY

Pick & Place Machine	Model	ILP™-30	ILP™-45
ASM (Siemens)	X series	●	●
	X series, D, F, HF, S series		●
Kulicke & Soffa (Assembleon)	Hybrid, iX, AX, iFlex	●	●
DIMA	XION, Hybrid, Modulo	●	●
FUJI	AIMEX II, NXT III series	●	●
	NXT series 1, 2, 3, AIMEX, AIMEX 2 & 2S		●
JUKI	Systems with mechanical or electrical feeder	●	●
	2000 series, 3000 series		●
MYCRONIC (MYDATA)	Suitable for most models. Please call IDENTCO for assistance.	●	●
PANASONIC	MWM	●	●
UNIVERSAL	All models with 24V or 42V	●	●
YAMAHA	YS, YSM, iPulse	●	●

LABEL REWINDER



ELR™-100 ELECTRONIC LABEL REWINDER

Free up hands and simplify post-print rewinding with the ELR™-100 rewriter. The Constant Adjustable Torque™ technology provides smooth, silent operation that produces a professionally wound roll of labels ready for mounting on label feeders and auto-apply equipment.

FEATURES AND BENEFITS

- Full size, heavy-duty label rewriter
- 6" wide fin-style core holder with two label flanges
- Label width up to 6" (152mm)

Part number	ELR-100
Description	Label rewriter, electronic
Label width	0.157 - 5.984 in (4-152mm)
Label height	0.157 - 5.984 in (4-152mm)
Label roll size	12.0 in (305mm) outside diameter
Core diameter	3" (76mm)
Base footprint	7.0 in x 15.0 in (177.8mm x 381mm)
Max. roll weight	20 lbs (9.1Kg)
Overall size	H14" x W12" x D17" (356mm x 303mm x 432mm)

PRINTER APPLICATOR



ELP™-A PRINTER/APPLICATOR

Increase speed and throughput of manual circuit board labeling with the ELP™ print and apply machine. The ELP-A unit is ideal for those situations where the label absolutely must be applied to the bare board before any other component or operation. This printer/applicator is a cost effective solution that ensures consistency of adhesion performance and placement accuracy. The built-in printer and tamper nozzle are designed to accommodate a broad range of label sizes and shapes.

FEATURES AND BENEFITS

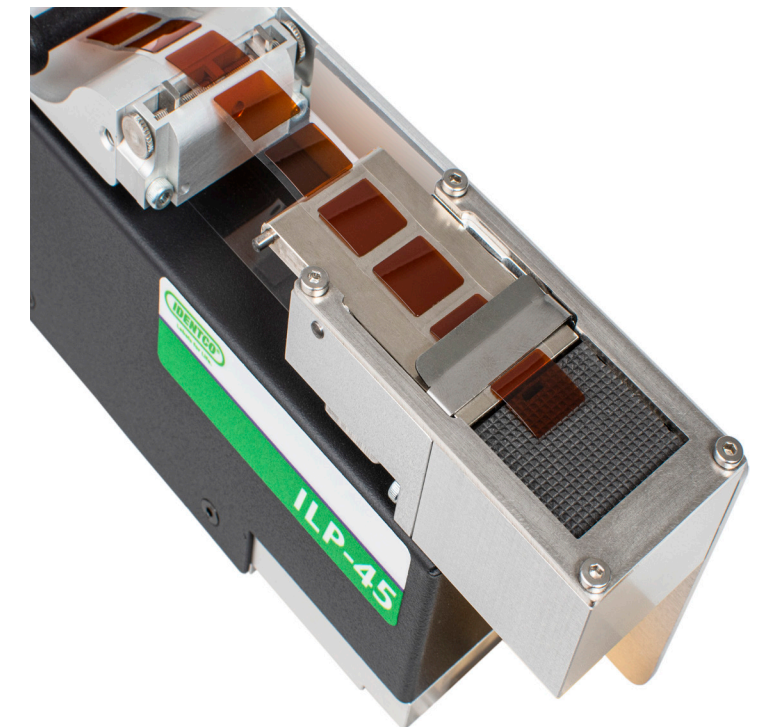
- Precise application tolerances of +/- .2mm (.007")
- Print and apply labels as small as 4mm x 4mm
- Large graphic display
- Application can be bottom to top, top to bottom or from either side
- Easily integrated into production lines or work cells
- Product can be presented to the applicator by hand or by automation
- Die-cast aluminum chassis provides a solid framework
- Ball-bearing transport rollers ensure highly accurate feeding of labels
- Easy to change printhead without adjustments or setups
- Host connection or stand alone operation

Part number	ELPA-2000
Description	Label applicator, automatic
Label width	0.157 - 2.283 in (4-58mm)
Label height	0.157 - 7.874 in (4-200mm)

POLYIMIDE MASKS

PICK AND PLACE DIE-CUT MASKS

IDENTCO solder masks are designed for use in ILP™ SMT pick and place feeders and other auto-apply equipment. Made of removable PT205HD 5 mil polyimide material, IDENTCO masks withstand direct contact with the fluxes, molten solder, and cleaning chemicals used in the printed circuit board manufacturing process. Withstanding temperatures up to 500 °F (260 °C), IDENTCO masks are designed to remove cleanly, leaving no adhesive residue. Masks are supplied on 2 mil polyester liner and IDENTCO's proprietary REEL-e™ dispenser reels for ultimate feeder and auto-apply equipment performance.



Part number	Material	Shape	Width inch (mm)	Height inch (mm)	Web width inch (mm)	Quantity per roll	Label feeder compatibility
DCP1205-AS250	PT205HD	Square	0.25 (6.35)	0.25 (6.35)	0.45 (11.43)	5000	ILP-30 / ILP-45
DCP1205-AS375	PT205HD	Square	0.375 (9.525)	0.375 (9.525)	0.50 (12.70)	5000	ILP-30 / ILP-45
DCP1205-AS500	PT205HD	Square	0.50 (12.70)	0.50 (12.70)	0.625 (15.875)	2500	ILP-45 only
DCP1205-AS625	PT205HD	Square	0.625 (15.875)	0.625 (15.875)	0.75 (19.05)	2500	ILP-45 only
DCP1205-AS750	PT205HD	Square	0.75 (19.05)	0.75 (19.05)	0.875 (22.225)	2500	ILP-45 only
DCP1205-AR250	PT205HD	Circle	0.25 (6.35)	0.25 (6.35)	0.45 (11.43)	5000	ILP-30 / ILP-45
DCP1205-AR375	PT205HD	Circle	0.375 (9.525)	0.375 (9.525)	0.50 (12.70)	5000	ILP-30 / ILP-45
DCP1205-AR500	PT205HD	Circle	0.50 (12.70)	0.50 (12.70)	0.625 (15.875)	2500	ILP-45 only
DCP1205-AR625	PT205HD	Circle	0.625 (15.875)	0.625 (15.875)	0.75 (19.05)	2500	ILP-45 only
DCP1205-AR750	PT205HD	Circle	0.75 (19.05)	0.75 (19.05)	0.875 (22.225)	2500	ILP-45 only

Custom sizes available



Labels for Life.

**UNITED STATES
HEADQUARTERS**

28164 W. Concrete Drive
Ingleside, IL 60041
Phone: +1 (815) 385 - 0011
Fax: +1 (815) 385 - 0359

**MEXICO
MONTERREY**

Carretera a Laredo KM 16,5
Bodega 14B Colonia Moisés Sáenz
Apodaca, Nuevo León CP 66613
Phone: +52 (81) 8008 - 0438

**EUROPE
GERMANY**

Güterbahnhofstraße 3-7
63450 Hanau
Phone: +49 (6181) 440 830 - 0
Fax: +49 (6181) 440 830 - 99

**ASIA
PRC**

Unit 1208, 12/F, Grand City Plaza
No. 1-17 Sai Lau Kok Road
Tsuen Wan, New Territories, Hong Kong
Phone: +852 2959 2156 Fax: +852 2959 2019