

Solder Paste Printer

RP-1

High-speed and high-precision printer equipped with "Motion Screen"

- "Motion Screen" feature fixes the printing position by moving the screen.
- Achieves high-accuracy positioning of $\pm 10\mu\text{m}$ and high-speed printing within 6 seconds + printing time.
- "High-Speed Cleaning" and "Automatic Solder Dispenser" features are available as options.

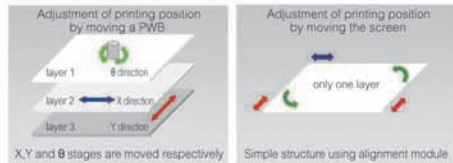
Positioning accuracy
 $\pm 10\mu\text{m}$



Motion Screen

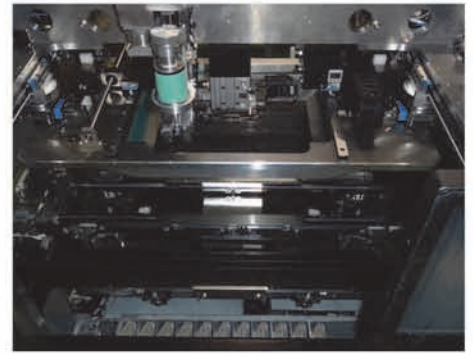
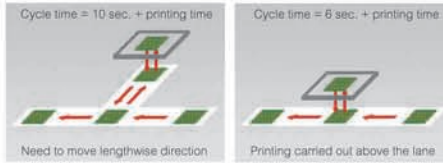
Positioning accuracy = $\pm 10\mu\text{m}$ (6σ)

"Motion Screen" is equipped with four alignment modules fixing the printing position by moving the screen at high-accuracy keeping a position of $\pm 10\mu\text{m}$ even for large-sized PWB's.



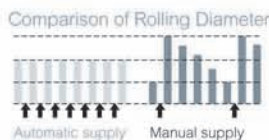
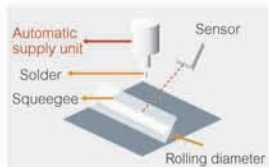
Cycle time = 6 sec. + printing time

"Motion Screen" does not need PWB's movement in the Y direction resulting in high-speed printing within 6 sec. + printing time.



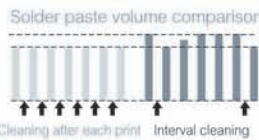
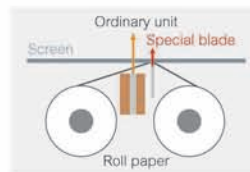
Automatic Solder Dispenser*

The automatic solder dispenser keeps the volume of solder paste on the screen at a constant and minimum necessary amount. This prevents smears and smudges, reducing mounting defects dramatically. *Option



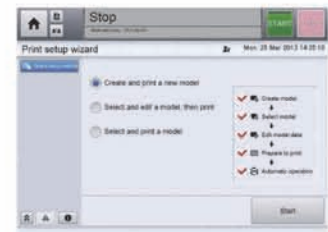
High-speed Cleaning*

A blade of original shape wipes away solder from the bottom of the screen at a high speed and also the paper consumption can be reduced down drastically. *Option



Easy Operation

Interactive wizard using a touch panel enables easy operation.



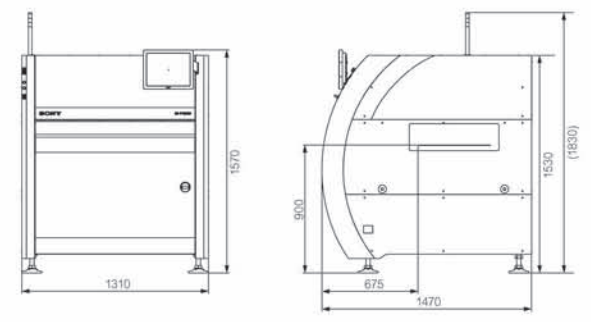
Specifications

Solder Paste Printer	
Model name	RP-1
PWB size	50mm × 50mm - 610mm × 510mm
Cycle time	6 sec. + Printing time
Positioning accuracy	$\pm 10\mu\text{m}$ (6σ)
Frame size	550mm × 650mm / 650mm × 550mm / 736mm × 736mm / 750mm × 750mm
Power supply	AC 200-230V 2.0kVA / 0.49MPa 430NI/min
Dimensions	W1,310mm × D1,470mm × H1,530mm
Weight	1,000kg

※ Above figures are subject to vary on the conditions. Please contact our sales reps for details.

External Dimensions

Unit: mm



JUKI®

MANUFACTURER: JUKI CORPORATION
 INQUIRY: JUKI AUTOMATION SYSTEMS CORPORATION
 2-11-1, Tsurumaki, Tama-shi, Tokyo 206-8551, JAPAN
 TEL.81-42-357-2293 FAX.81-42-357-2285

<http://www.juki.co.jp>



JUKI CORPORATION HEAD OFFICE

An environmental management system to promote and conduct the following:
 (1) Eco-friendly development of products and technologies
 (2) Green procurement and green purchasing
 (3) Energy conservation (reduction in carbon-dioxide emissions)
 (4) Resource saving (reduction of papers purchased, etc.)
 (5) Reduction and recycling of waste in the activities of research, development, design, sales, distribution, and maintenance services of industrial sewing machines and industrial robots, etc., including sales and maintenance services of data entry systems.

North America Headquarters:

Juki Automation Systems
 507 Airport Blvd.
 Morrisville, NC 27560
 Phone: 919-460-0111
 Email: sales@jas-smt.com
www.jukiamericas.com

North America Sales Office:

Juki Automation Systems
 47102 Mission Falls Court
 Suite 101
 Fremont, CA 94539
 Phone: 510-249-6700