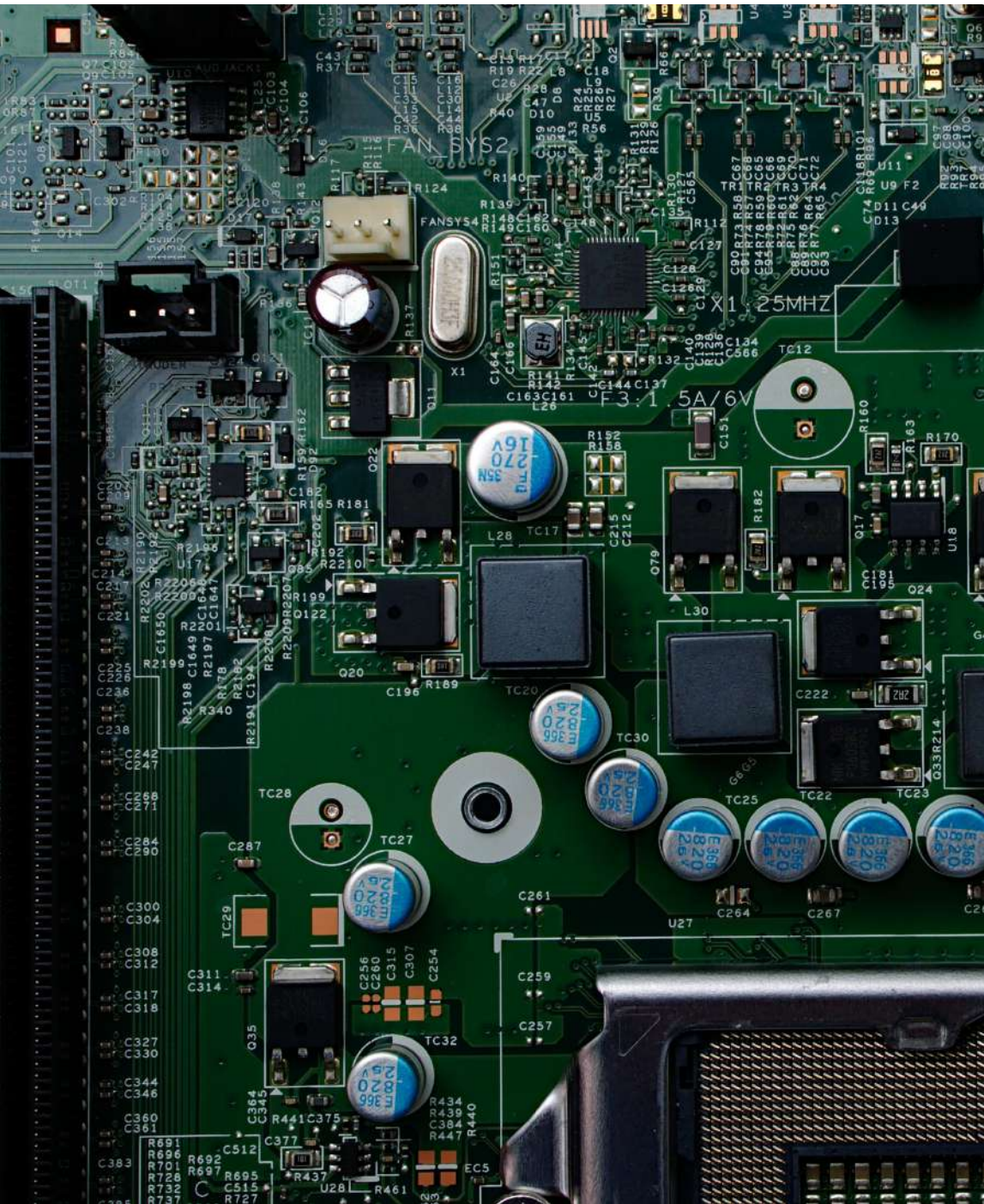
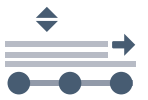
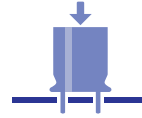
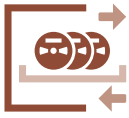
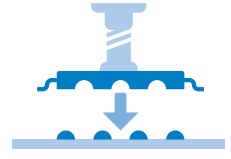


RX-7

JUKI

JUKI Smart Solutions

High Speed Compact Modular Mounter
Achieve high area productivity with a smaller and lighter design



Unrivalled Productivity in a Compact Footprint with Advanced High Speed and High Accuracy, makes the RX-7 the most efficient Modular Chip-Shooter available today!



FEATURE 1: Super-High Productivity

The RX-7 has three key features for efficient production:
Super Rotary Head, Parallel Placement Heads, and Dual Lane Conveyor



FEATURE 2: Super Slim Design

At only 988mm wide and with a placement speed of 49,000 CPH (IPC9850), the RX-7 provides excellent placement per square foot!

Rated
49,000 CPH
(IPC9850)



High Speed Compact Modular Mounter
RX-7

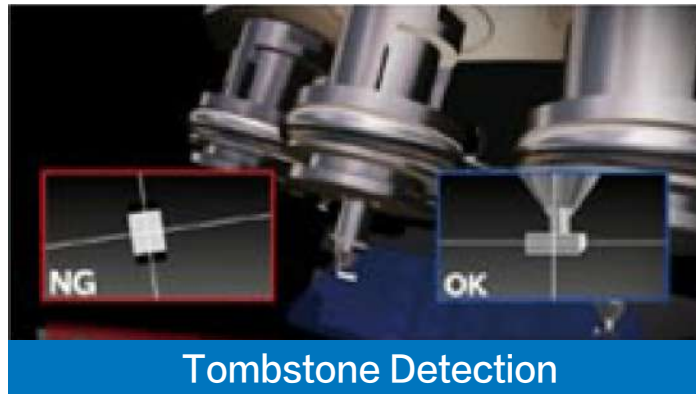
Placement Speed: 49,000 CPH (IPC9850)

Component Size: 0402 (01005) - 5mm



FEATURE 3: High Quality

The head-mounted centering camera can also detect tombstones, component presence/absence, and upside down components. Small components are placed accurately and reliably



FEATURE 4: Complete Line Solution

Whether it is high-volume or high-mix production that is required, JUKI has the solution for you! JUKI offers a complete range of SMT manufacturing line solutions designed to improve efficiency, quality and reliability that will improve yields and maximize profit.



Solder Paste Printer

PWB Visual Inspection Machine (SPI)

High-Speed Compact Modular Mounter

High-Speed Compact Modular Mounter

High-Speed Compact Modular Mounter

PWB Visual Inspection Machine (SPI)

RP-1

RV-1

RX-7

RX-7

RX-6

RV-1

Specification

High-Speed Compact Modular Mounter RX-7

Board size	Single lane conveyor	50 x 50 - 360 x 450 mm
	Dual lane conveyor	50 x 50 - 360 x 250 mm
Component height		3mm
Component size		0402 (01005) - 5mm
Placement speed	Chip	49,000 CPH (IPC9850)
Placement accuracy		±0.04mm (Cpk ≥ 1)
Feeder capacity		Max. 76 using dual lane 8mm tape
Power supply		AC 200 - 415v, 3-phase
Apparent power		3.3 kVA
Operating air pressure		0.5 ± 0.05MPa
Air Consumption (standard)		20L/min (during normal operation)
Machine dimensions (W x D x H)		998 x 1,895 x 1,530mm
Mass (approximately)		1,950kg

Options

Software	IS/IFS-NX
Component handling and feeders	Feeder Trolley / Electric tape feeder / Tape reel mounting base / Feeder trolley
	Feeder stacker / Splicing jig / Feeder Calibration Jig with Monitor / Electric trolley Power Station

*Please refer to the product specifications for details.



JUKI CORPORATION HEAD OFFICE

The activities of research, development, design, sales, distribution, and maintenance services of industrial sewing machines, household sewing machines and industrial robots, etc., including sales and maintenance services of data entry systems.

*Please refer to the product specifications for details.

■JUKI Specifications and appearance may be changed without notice.

Juki Americas Headquarters

5151 McCrimmon Parkway, Suite 200
Morrisville, NC 27560
Phone: 919-460-0111
Fax: 919-469-0480

California Office

412 Kato Terrace
Fremont, CA 94539
Phone: 510-249-6700
Fax: 510-249-6710

JUKI
www.jukiamerica.com