
C057



OPERATING INSTRUCTIONS

May 2000

Serial Number _____

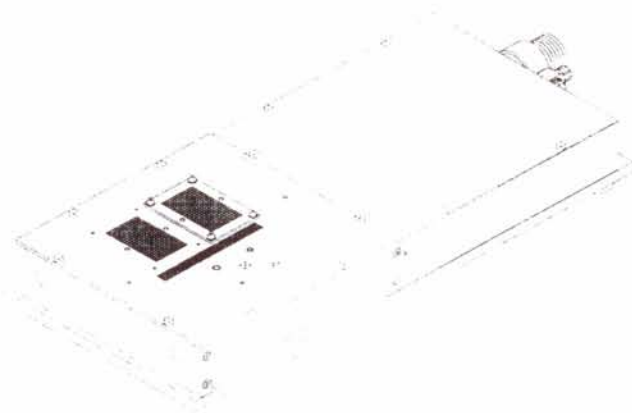


TABLE OF CONTENTS

| | | |
|-----|-----------------------------------|---|
| 1.0 | GENERAL DESCRIPTION | 1 |
| 2.0 | SETTING UP THE MACHINE | 1 |
| 3.0 | OPERATION | 1 |
| 4.0 | CUTTING BLADE EXCHANGE | 2 |
| 5.0 | PREVENTIVE MAINTENANCE | |
| 5.1 | Daily | 3 |
| 5.2 | Quarterly | 3 |
| 6.0 | TECHNICAL SPECIFICATIONS | 3 |
| 7.0 | PARTS LIST | 4 |
| 8.0 | ILLUSTRATED PARTS BREAKDOWN | 5 |
| 9.0 | PNEUMATIC DIAGRAM | 6 |

Note: Some machines may vary from pictorials and illustrations as shown.

1.0 GENERAL DESCRIPTION:

The Streckfuss model C057 is designed to cut the leads of loose radial components with lead diameters up to .032". The machine is supplied with a .118" thick shear plate having pre-drilled hole patterns. A .080" thick spacer plate is supplied over one of two grid patterns. The C057 utilizes a spring loaded cutting blade drawn across the bottom surface of the shear plate to provide the cutting action. Components are hand fed into the machine with the leads extending through the appropriate hole pattern. Once the component is seated against the shear plate the foot pedal is depressed and the cutting blade is advanced cutting the leads evenly.

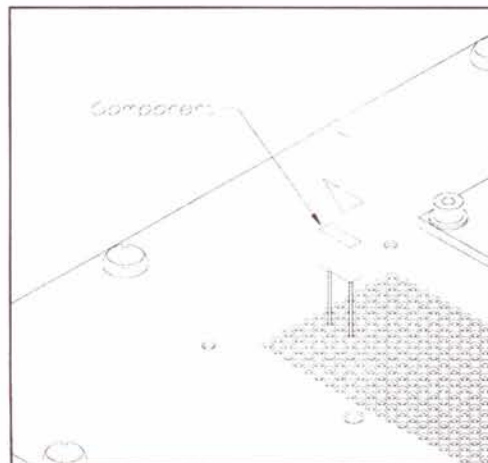
2.0 SETTING UP THE MACHINE:

1. Place the C057 on a suitable work surface with the foot pedal in a convenient location on the floor.
2. Connect the PU-3 air hose coming from the front of the air cylinder to the top right port located on the back of the foot pedal.
3. Connect the PU-3 air hose coming from the rear of the air cylinder to the top left port located on the back of the foot pedal.
4. Connect one end of the PU-6 air hose provided to the bottom port located on the back of the foot pedal and the other end to a clean, dry air supply rated at 60 to 90 psi.

Note: Refer to the pneumatic diagram as needed for further instructions.

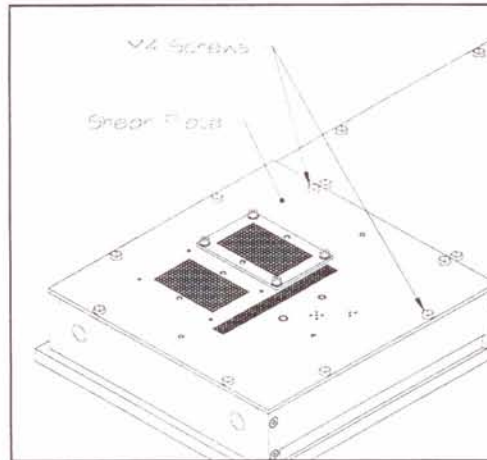
3.0 OPERATION:

1. Select a component to be cut and insert its leads into the appropriate hole pattern location on the shear plate. Insert the component until its body is fully seated against the shear plate.
2. Depress the foot pedal once and the cutting blade will advance cutting the leads evenly. Release the foot pedal and remove the component.

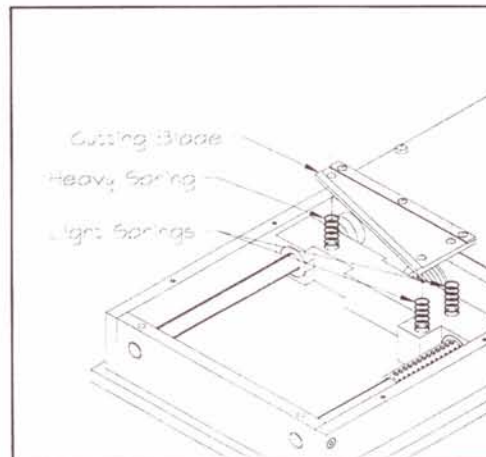


4.0 CUTTING BLADE EXCHANGE:

1. Remove the eight M4 screws securing the shear plate and carefully remove the shear plate.



2. Remove the cutting blade and three compression springs.



3. Re-install the three compression springs and new cutting blade.
4. Re-install the shear plate and secure using the eight M4 screws.

Note: One of the springs is heavier than the other two. Install this spring under the cutting blade in the location indicated.

5.0 PREVENTIVE MAINTENANCE:

5.1 Daily

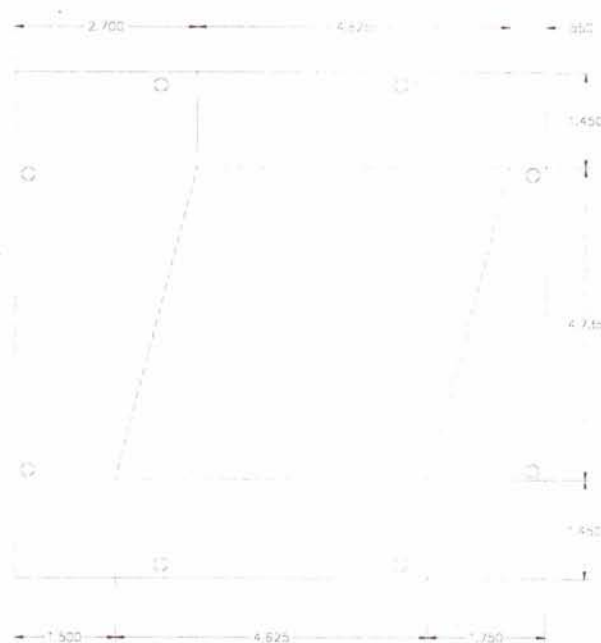
1. Clean any scrap leads or other debris from the machine using a brush or vacuum.
2. Apply a light coating of 10w oil to the top surface of the shear plate.

5.2 Quarterly

1. Clean any scrap leads or other debris from the machine using a brush or vacuum.
2. Remove the eight screws (Dwg. 35.0, Item 3) securing the shear plate (Dwg. 35.0, Item 2).
3. Remove the cutting blade (Dwg. 35.0, Item 1) and springs (Dwg. 35.0, Item 32 & 33).
4. Inspect the bottom surface of the shear plate and the cutting blade for wear.
5. Apply a light amount of 10w oil to the shafts (Dwg. 35.0, Item 31) and the felt oil pads (Dwg. 35.0, Item 21).
6. Re-install the springs, cutting blade and shear plate and secure using the eight screws.

6.0 TECHNICAL SPECIFICATIONS:

| | |
|------------------------|--|
| Production Rate: | 500 - 1000 pcs/hr |
| Machine Dimensions: | 8.0" W x 17.0" L x 3.0" H |
| Pneumatic Requirement: | 60 - 80 psi |
| Shear Plate: | Pre-Drilled & Hardened @ .118" Thickness (Custom Patterns Upon Request) |

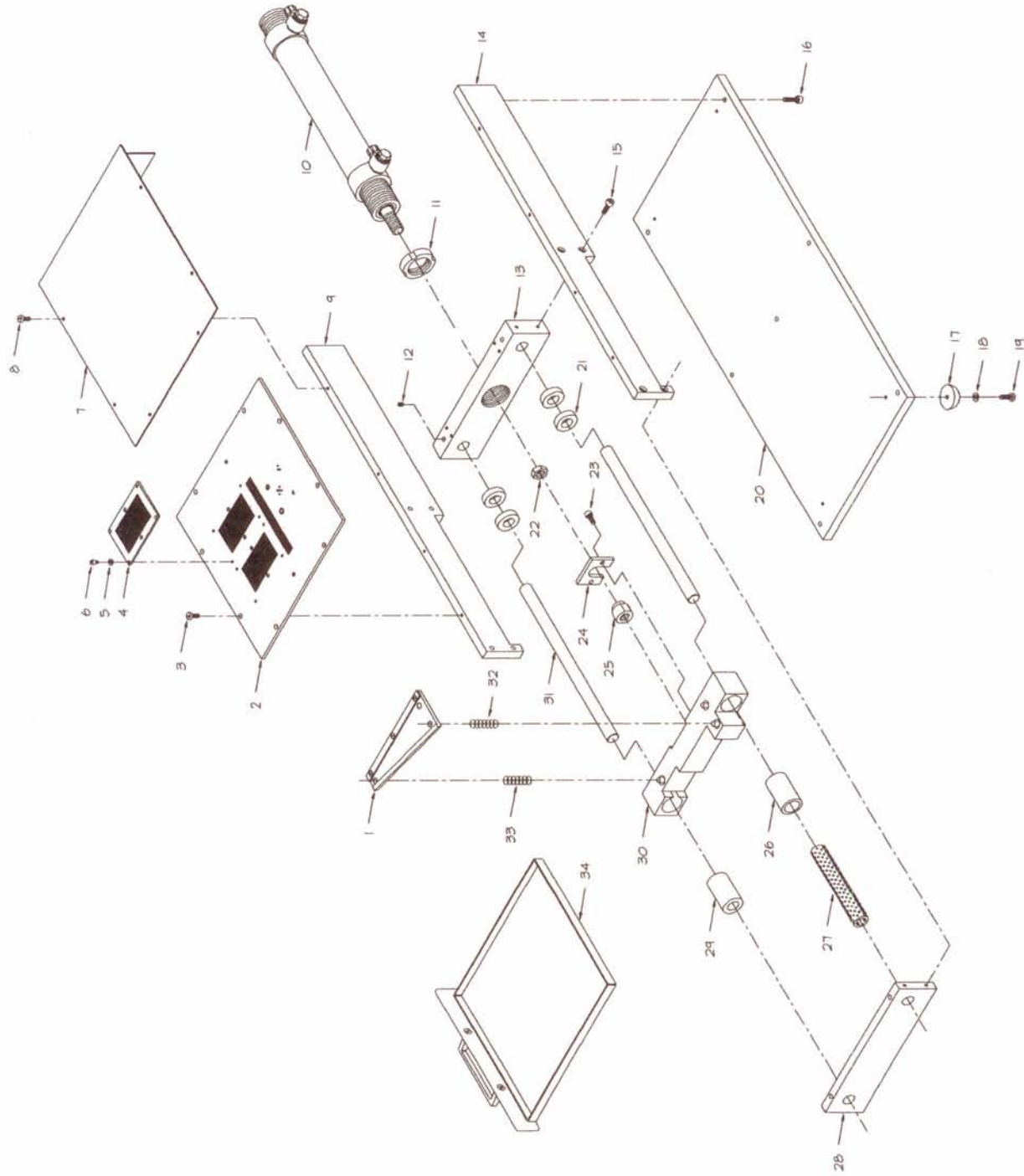


Workable Area

7.0 PARTS LIST:

| Dwg # | Item # | Part Number | Description | Qty | Notes |
|-------|--------|-----------------------------|---|-----|--------------|
| 35.0 | 1 | T-C057-001 | Cutting Blade | 1 | ¹ |
| 35.0 | 2 | T-C057-002 | Standard Shear Plate (3.0mm) | 1 | |
| 35.0 | 3 | P-C057-010 | DIN 85 4x8 Pan Head Machine Screw | 8 | |
| 35.0 | 4 | P-C057-020 | Standard Spacer Plate (2.0mm) | 1 | |
| 35.0 | 5 | P-C057-023 | DIN 125 M3 Flat Washer | 4 | |
| 35.0 | 6 | P-C057-009 | DIN 912 3x4 Socket Head Cap Screw | 4 | |
| 35.0 | 7 | P-C057-024 | Machine Cover | 1 | |
| 35.0 | 8 | P-C057-025 | DIN 85 4x6 Pan Head Machine Screw | 6 | |
| 35.0 | 9 | P-C057-026 | Side Plate (Left) | 1 | |
| 35.0 | 10 | P-C057-007 | Cylinder (DGW-32-140) | 1 | |
| 35.0 | 11 | P-C057-012 | Shaft Nut | 1 | |
| 35.0 | 12 | P-C057-027 | DIN 913 4x4 Flat Point Socket Set Screw | 4 | |
| 35.0 | 13 | P-C057-011 | Mounting Block (Rear) | 1 | |
| 35.0 | 14 | P-C057-028 | Side Plate (Right) | 1 | |
| 35.0 | 15 | P-C057-029 | DIN 912 4x12 Socket Head Cap Screw | 8 | |
| 35.0 | 16 | P-C057-030 | DIN 912 4x16 Socket Head Cap Screw | 7 | |
| 35.0 | 17 | P-C057-031 | Rubber Foot | 4 | |
| 35.0 | 18 | P-C057-032 | DIN 125 M4 Flat Washer | 4 | |
| 35.0 | 19 | P-C057-033 | DIN 85 4x12 Pan Head Machine Screw | 4 | |
| 35.0 | 20 | P-C057-034 | Base Plate | 1 | |
| 35.0 | 21 | P-C057-003 | Felt Oil Pad | 4 | ¹ |
| 35.0 | 22 | P-C057-016 | DIN 934ZP M10 Hex Nut | 1 | |
| 35.0 | 23 | P-C057-013 | DIN 912 4x10 Socket Head Cap Screw | 2 | |
| 35.0 | 24 | P-C057-014 | Retaining Bracket | 1 | |
| 35.0 | 25 | P-C057-015 | Coupling Block | 1 | |
| 35.0 | 26 | P-C057-006 | Bushing | 1 | |
| 35.0 | 27 | P-C057-004 | Linear Bearing (12x100) | 1 | |
| 35.0 | 28 | P-C057-035 | Mounting Block (Front) | 1 | |
| 35.0 | 29 | P-C057-001 | Bushing | 1 | |
| 35.0 | 30 | P-C057-017 | Cutting Blade Drive Block | 1 | |
| 35.0 | 31 | P-C057-005 | Shaft | 2 | |
| 35.0 | 32 | P-C057-002 } 038 | Compression Spring (35.0.32) | 2 | ¹ |
| 35.0 | 33 | P-C057-036 } | Compression Spring (35.0.33) | 1 | ¹ |
| 35.0 | 34 | P-C057-018 | Scrap Tray | 1 | |
| | | P-C057-021 | Foot Pedal (F-5-1/4B) | | |
| | | P-C057-022 | Foot Guard (4500 FH) | | |

¹ Denotes Recommended Spare Part



NOTES:
 1. SOME ITEMS MAY BE REMOVED FOR CLARITY.
 2. SOME MODELS MAY VARY FROM ILLUSTRATION AS SHOWN

| | | | | | |
|----------------------|--|------------------------------|--|-------|--|
| MODEL NO. | | DRAWING NO. | | SHEET | |
| DRAWN BY | | DATE | | 1/1 | |
| A. SPRINGER | | 8/95 | | 27288 | |
| TITLE | | PARTS IDENTIFICATION DRAWING | | REV | |
| Streckfuss USA, Inc. | | | | 35.0 | |
| | | | | REV | |

