
C053



OPERATING INSTRUCTIONS

May 2000

Serial Number _____

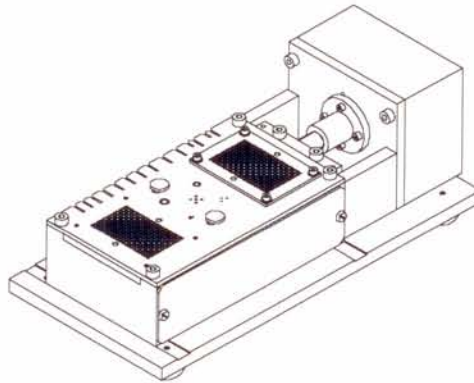


TABLE OF CONTENTS

1.0	GENERAL DESCRIPTION	1
2.0	SETTING UP THE MACHINE	1
3.0	OPERATION	1
4.0	PREVENTIVE MAINTENANCE	
4.1	Daily	2
4.2	Quarterly	2
5.0	TECHNICAL SPECIFICATIONS	2
6.0	PARTS LIST	3
7.0	ILLUSTRATED PARTS BREAKDOWN	4
8.0	PNEUMATIC DIAGRAM	5

Note: Some machines may vary from pictorials and illustrations as shown.

1.0 GENERAL DESCRIPTION:

The Streckfuss model C053 is designed to cut the leads of loose radial components with lead diameters up to .032". The machine is supplied with a .118" thick shear plate having pre-drilled hole patterns. A .080" thick spacer plate is supplied over one of two grid patterns. The C053 utilizes two precision drilled plates with the cutting action performed by displacing the bottom plate approximately .100". Components are hand fed into the machine with the leads extending through the appropriate hole pattern. Slots located along the edge of the plates spanning from .200" to .600" are also provided. Once the component is seated against the shear plate the foot pedal is depressed and the cutting plate is displaced cutting all the leads evenly and in a single motion.

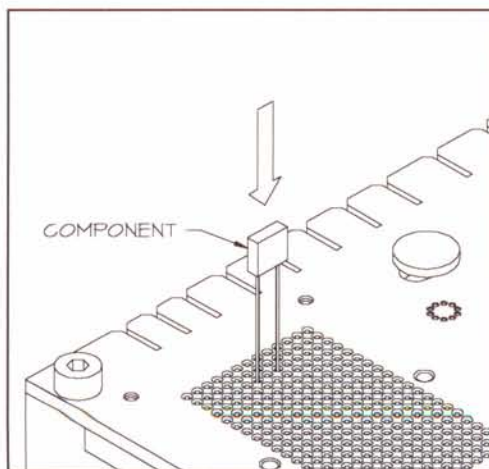
2.0 SETTING UP THE MACHINE:

1. Place the C053 on a suitable work surface with the foot pedal in a convenient location on the floor.
2. Connect one end of one of the PU-6 air hoses provided to the air fitting located at the back of the machine and the other end to the top port located on the back of the foot pedal.
3. Connect one end of one of the PU-6 air hoses provided to the bottom port located on the back of the foot pedal and the other end to a clean, dry air supply rated at 60 to 90 psi.

Note: Refer to the pneumatic diagram as needed for further instructions.

3.0 OPERATION:

1. Select a component to be cut and insert its leads into the appropriate hole pattern or slot location on the shear plate. Insert the component until its body is fully seated against the shear plate.
2. Depress the foot pedal once and the cutting blade will displace cutting all the leads evenly in a single motion. Release the foot pedal and remove the component.



4.0 PREVENTIVE MAINTENANCE:

4.1 Daily

1. Clean any scrap leads or other debris from the machine using a brush or vacuum.
2. Apply a light coating of 10w oil to the top surface of the shear plate.

4.2 Quarterly

1. Clean any scrap leads or other debris from the machine using a brush or vacuum.
2. Remove the two hex nuts (Dwg. 25.0, Item 32) the two shear plate bolts with spacers (Dwg. 25.0, Item 4).
3. Remove the four M5x10 screws (Dwg. 25.0, Item 3) and the shear plate (Dwg. 25.0, Item 2).
4. Inspect the bottom surface of the shear plate and top surface of the cutting blade (Dwg. 25.0, Item 1) for wear.
5. Apply a light coating of 10w oil to both surfaces of the shear plate and to the top surface of the cutting blade.
6. Re-install the shear plate and the two shear plate bolts with spacers.

Note: *Tighten the two hex nuts for the shear plate bolts securely.*

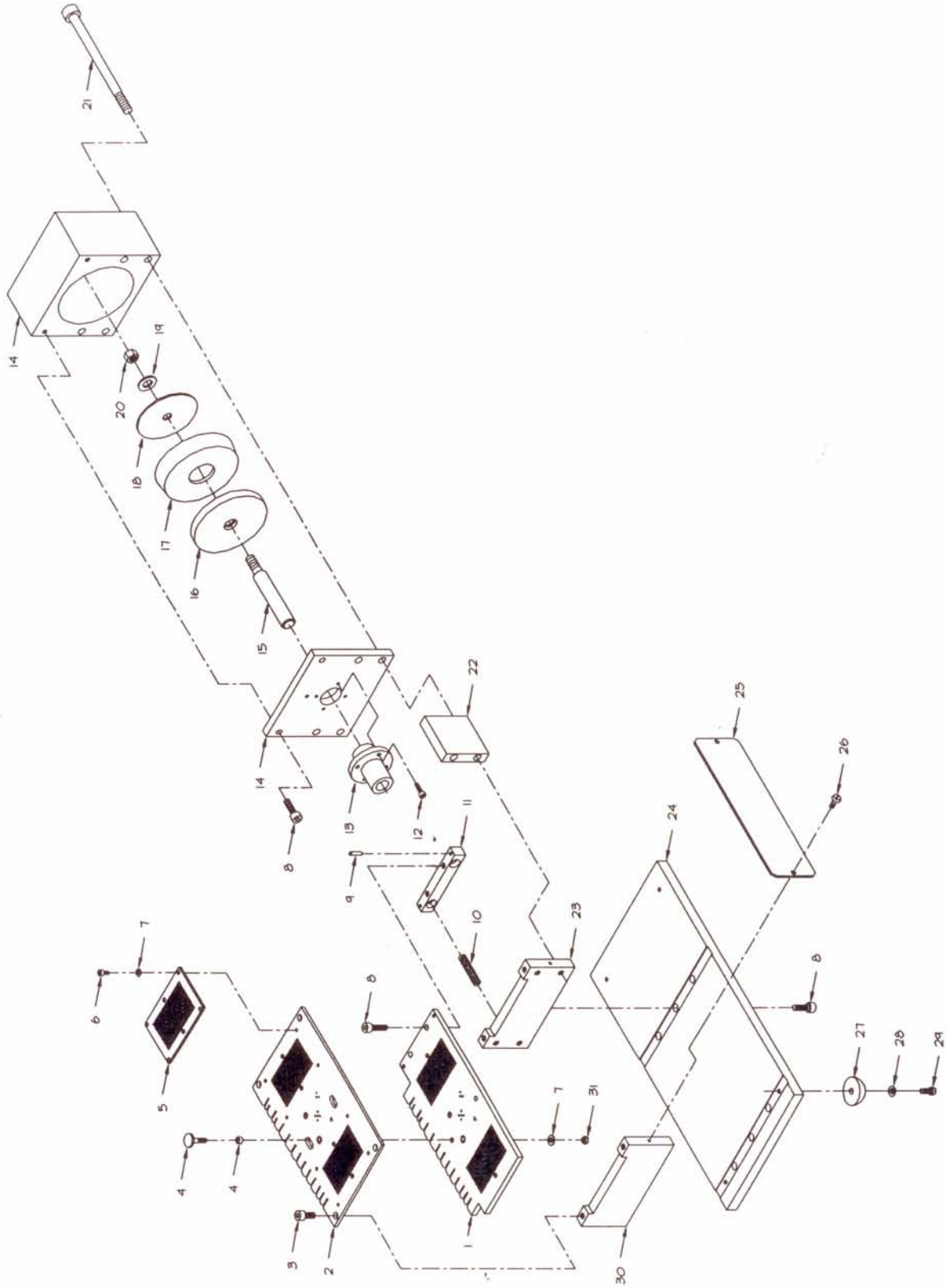
5.0 TECHNICAL SPECIFICATIONS:

Production Rate:	500 - 1000 pcs/hr
Machine Dimensions:	5.0" W x 12.0" L x 4.5" H
Pneumatic Requirement:	60 - 80 psi
Shear Plate:	Pre-Drilled & Hardened @ .118" Thickness (Custom Patterns Upon Request)

6.0 PARTS LIST:

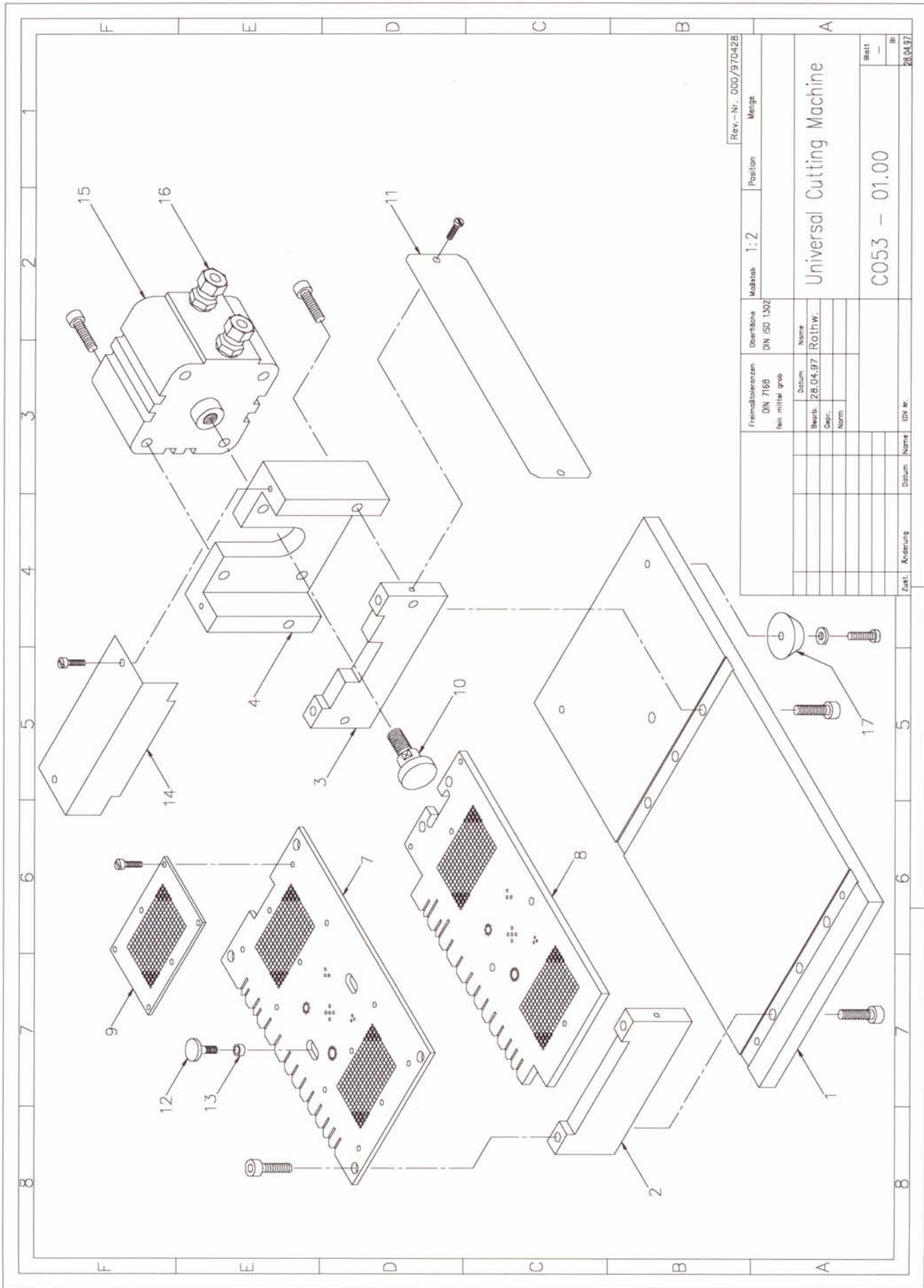
Dwg #	Item #	Part Number	Description	Qty	Notes
25.0	1	P-C053-011	Cutting Plate	1	
25.0	2	P-C053-010	Standard Shear Plate (3.0mm)	1	
25.0	3	P-C053-017	DIN 912 5x10 Socket Head Cap Screw	4	
25.0	4	P-C053-002	Shear Plate Bolt & Spacer	2	
25.0	5	P-C053-001	Standard Spacer Plate (2.0mm)	1	
25.0	6	P-C053-019	DIN 912 3x5 Socket Head Cap Screw	4	
25.0	7	P-C053-041	DIN 125 M3 Flat Washer	6	
25.0	8	P-C053-018	DIN 912 5x16 Socket Head Cap Screw	12	
25.0	9	P-C053-042	DIN 6324H 3x16 Dowel Pin	2	
25.0	10	P-C053-004	Compression Spring (25.0.10)	2	
25.0	11	P-C053-008	Drive Block	1	
25.0	12	P-C053-020	DIN 912 3x10 Socket Head Cap Screw	4	
25.0	13	P-C053-007	Piston Shaft Bushing	1	
25.0	14	P-C053-012	Cylinder Block	1	
25.0	15	P-C053-044	Piston Shaft	1	
25.0	16	P-C053-045	Piston Plate (Front)	1	
25.0	17	P-C053-003	Piston	1	
25.0	18	P-C053-046	Piston Plate (Rear)	1	
25.0	19	P-C053-047	DIN 125 M8 Flat Washer	1	
25.0	20	P-C053-048	DIN 934ZP M8 Hex Nut	1	
25.0	21	P-C053-021	DIN 912 6x120 Socket Head Cap Screw	4	
25.0	22	P-C053-016	Support Block	2	
25.0	23	P-C053-014	Shear Plate Mount (Rear)	1	
25.0	24	P-C053-013	Base Plate	1	
25.0	25	P-C053-049	Cover Plate	1	
25.0	26	P-C053-050	DIN 85 3x6 Pan Head Machine Screw	2	
25.0	27	P-C053-009	Rubber Foot	4	
25.0	28	P-C053-051	DIN 125 M4 Flat Washer	4	
25.0	29	P-C053-023	DIN 85 4x10 Pan Head Machine Screw	4	
25.0	30	P-C053-015	Shear Plate Mount (Front)	1	
25.0	31	P-C053-052	DIN 934ZP M3 Hex Nut	2	
		P-C053-039	Foot Guard (4500 FH)		
		P-C053-039	Foot Pedal (F-3-¼B)		

¹ Denotes Recommended Spare Part



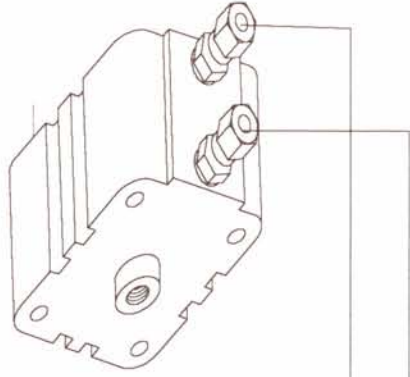
NOTES:
 1. SOME ITEMS MAY BE REMOVED FOR CLARITY
 2. SOME MODELS MAY VARY FROM ILLUSTRATION AS SHOWN

	Streckfuss USA, Inc.				TITLE PARTS IDENTIFICATION DRAWING			
	MODEL NO. C053	DRAWING NO. 25.0	DATE 5/95	REV A	SHEET 1/1	537004		

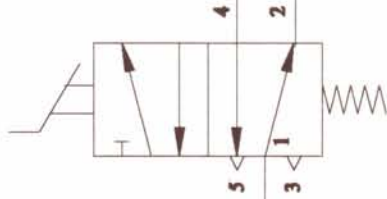


Rev.-Nr. 000/970428		Maßstab	1:2	Position	Menge
Freindimensionen DIN 7168 fein mittel grob		Deutsche DIN ISO 1302			
Bearb. 28.04.97		Name Röthw.		Universal Cutting Machine	
Datum		Norm		C053 - 01.00	
Zust. Änderung		Datum		Blatt	
Name		IDN Nr.		I	
				II	
				28.04.97	

Cylinder

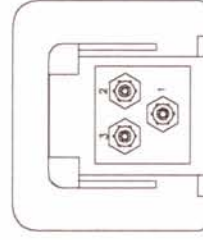


FOOT PEDAL
F-5-1M-B



● SUPPLY RATED @ 60-90 PSI

FOOT PEDAL



NOTES:
1. SOME MODELS MAY VARY FROM ILLUSTRATION AS SHOWN